



INSTRUCTIONS & PARTS LIST FOR NO. 2 1/2 SERIES MULTI-ASSEMBLY TOOLS AIR ANGLE SCREWDRIVER, NUTRUNNERS, & DRILLS

Fig. Part

No.	No.	Description
1.	64035	Housing (Reversing)
	64036	Housing (Non-Reversing)
2.	14333	Ring—"O"
3.	40116	Material—Exhaust
4.	04041	Cover—Housing (Reversing)
	04042	Cover—Housing (Non-Reversing)
5.	35737	Lever
6.	54837	Adapter-Intake
7.	14312	Ring—"O"
8.	30463	Screen
9.	21541	Ring—Retaining
10.	41334	Bail
11.	65499	Screw—Pan Hd. (Self-Tap)(#6-32 x 3/4)(2)*
12.	63241	Ass'y—Valve
13.	21427	Spring
14.	14309	Ring—"O"
15.	54844	Retainer—Speed Control
16.	14394	Ring—"O"
17.	14291	Ring—"O"
18.	54843	Speed—Control
19.	1376	Hose—Leader
20.	63355	Ass'y—Hose Exhaust
21.	21427	Spring (Reversing Only)
22.	64038	Spool—Valve (Reversing Only)
	64097	Spool—Valve Locking
23.	06254	Screw—Spool Retaining (Reversing Only)

COMPLETE ASSEMBLY

63443	Ass'y—Housing (Reversing) (Includes Figs. 1-18 & 21-23)
63444	Ass'y—Housing (Non-Reversing) (Includes Figs. 1-18)

LEVER HOUSING

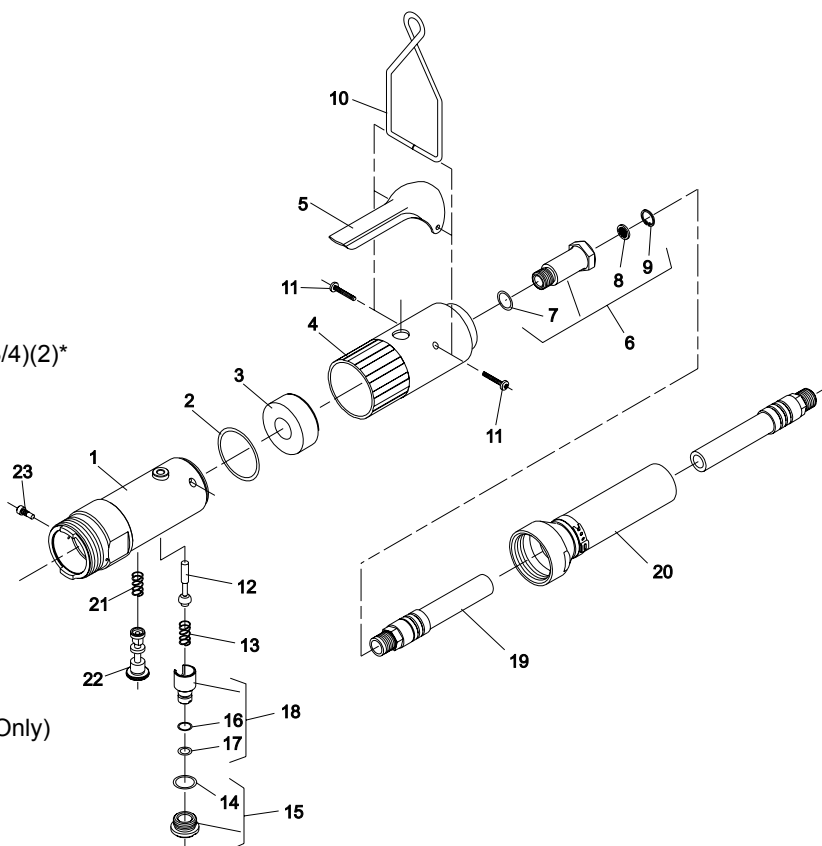


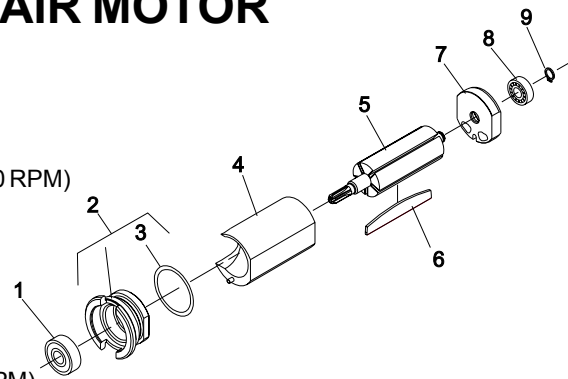
Fig. Part

No.	No.	Description
1.	10220	Bearing—Ball
2.	13550	End Plate—Front
3.	14342	Ring—"O"
4.	64108	Cylinder (Reversing)
	64057	Cylinder (Non-Reversing)
5.	54860	Rotor (6-Tooth)(700, 900, 1200, 1600, 2000, 2600 4400, 5800 RPM)
	54861	Rotor (8-Tooth)(400, 540, 2500, 3350 RPM)
6.	63192	Ass'y—Rotor Vane (Set of 5)
7.	10552	End Plate—Rear
8.	10230	Bearing—Ball
9.	21491	Ring—Retaining

COMPLETE ASSEMBLY

63375	Ass'y—Motor (6-Tooth)(Reversing)(700, 1200, 2000, 4400 RPM)
63376	Ass'y—Motor (8-Tooth)(Reversing)(400, 2500 RPM)

AIR MOTOR



*Order Quantity As Required

FURNISH CATALOG, SERIAL, AND MODEL
NUMBER WHEN ORDERING PARTS

SIoux TOOLS INC.

2901 FLOYD BOULEVARD ■ PO BOX 507 ■ SIOUX CITY, IOWA 51102-0507 USA ■

Printed In U.S.A.

ANGLE TOOLS

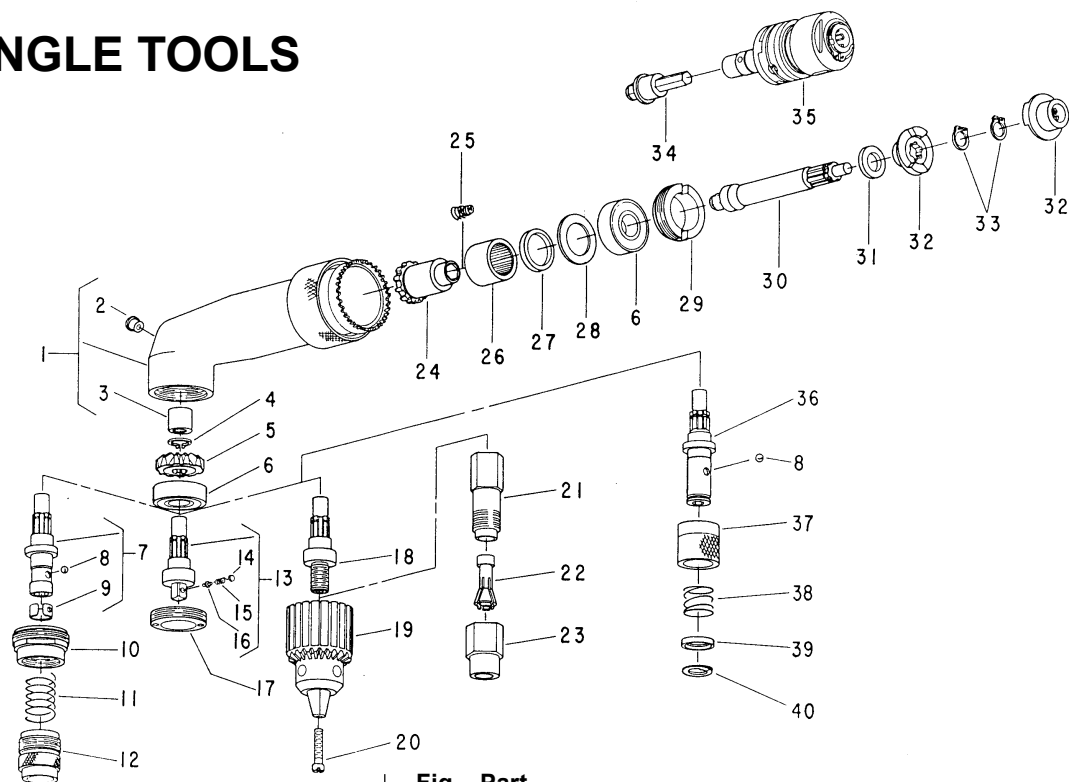


Fig. Part

No.	No.	Description
1.	43794	Ass'y—Long Angle Head
	43795	Ass'y—Short Angle Head
2.	30375	Fitting—Grease
3.	10012	Bearing—Needle
4.	21545	Ring—Retaining
5.	19721A	Ass'y—Gear and Pinion (Includes Fig. 24)
	19721	Ass'y—Gear and Pinion (Includes Fig. 24) (Used on Earlier Models)
6.	10226	Bearing—Ball (2)*
7.	43562	Ass'y—Drive Socket
8.	10902	Ball—Steel
9.	25854	Ring—Ball Retaining
10.	44036	Retainer—Bearing
11.	41251	Spring—Finder
12.	54128	Retainer—Finder
13.	43563	Spindle—Tool (1/4" Sq.)
	43564	Spindle—Tool (3/8" Sq.)
14.	34667	Retainer—Plunger
15.	21391	Spring (1/4" Sq.)
	21223	Spring (3/8" Sq.)
16.	34965	Plunger (1/4" Sq.)
	34666	Plunger (3/8" Sq.)
17.	44776	Retainer—Bearing (Nutrunner and Drill, Quick Change)
18.	22651	Spindle—Chuck (Drill and Collet)
19.	21077	Chuck (0-1/4" Cap)
	21133	Chuck 1/16"-3/8" Cap)
	30000	Key—1/4" Chuck
	30002	Key—3/8" Chuck
20.	06602	Screw (#8-32 x 7/8")
21.	21096	Body—Collet
22.	44440	Collet—1/4"
	44523	Collet—3/16"
	44522	Collet—1/8"
23.	21097	Nut—Collet
	30465	Wrench (9/16")
	30466	Wrench (11/16")
24.	19721A	Ass'y—Gear and Pinion (Includes Fig. 5)
	19721	Ass'y—Gear and Pinion (Includes Fig. 5) (Used on Earlier Models)

Screwdriver

Nutrunner

Fig. Part

No.	No.	Description
25.	21401	Spring
26.	10049	Bearing—Needle
27.	44780	Spacer (Used Only With 19721)
28.	35214	Washer
29.	44775	Retainer—Bearing
30.	64042	Connector—Short (Direct Clutch Screwdriver)
	64043	Connector—Long (Direct Clutch Nutrunner)
31.	44663	Spacer (Direct Clutch)
32.	64039	Clutch—Direct (2)*
33.	21500	Ring—Retaining (2)*
34.	54101	Connector (Adjustable Clutch)
35.	53107	Ass'y—Adjustable Clutch
36.	22719	Spindle—Drive
37.	54468	Retainer—Ball
38.	21406	Spring—Quick Change
39.	44660	Ring—Guide
40.	21501	Ring—Retaining

COMPLETE ASSEMBLY

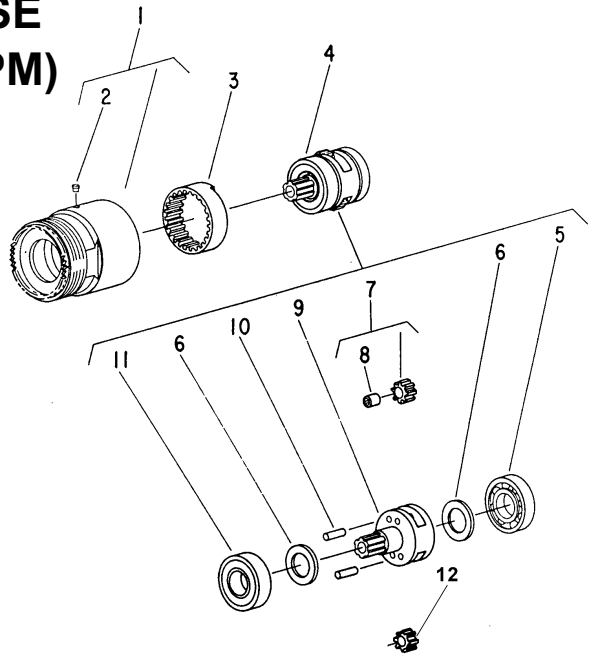
63497	Ass'y—Short Angle Head (Direct Clutch—Screwdriver)
63498	Ass'y—Long Angle Head (Direct Clutch—1/4" Sq. Nutrunner)
63499	Ass'y—Long Angle Head (Direct Clutch—3/8" Sq. Nutrunner)
63559	Ass'y—Short Angle Head (Direct Clutch—Screwdriver Quick Change)
53110	Ass'y—Long Angle Head (Adjustable Clutch—1/4" Sq. Nutrunner)
53111	Ass'y—Long Angle Head (Adjustable Clutch—3/8" Sq. Nutrunner)
53112	Ass'y—Long Angle Head (Adjustable Clutch—Screwdriver)
63558	Ass'y—Long Angle Head (Adjustable Clutch—Screwdriver Quick Change)
63500	Ass'y—Short Angle Head (1/4" Drill)
63501	Ass'y—Short Angle Head (3/8" Drill)

*Order Quantity As Required

SINGLE REDUCTION GEAR CASE (2000, 2500, 2600, 3350, 5800 RPM)

Fig. Part

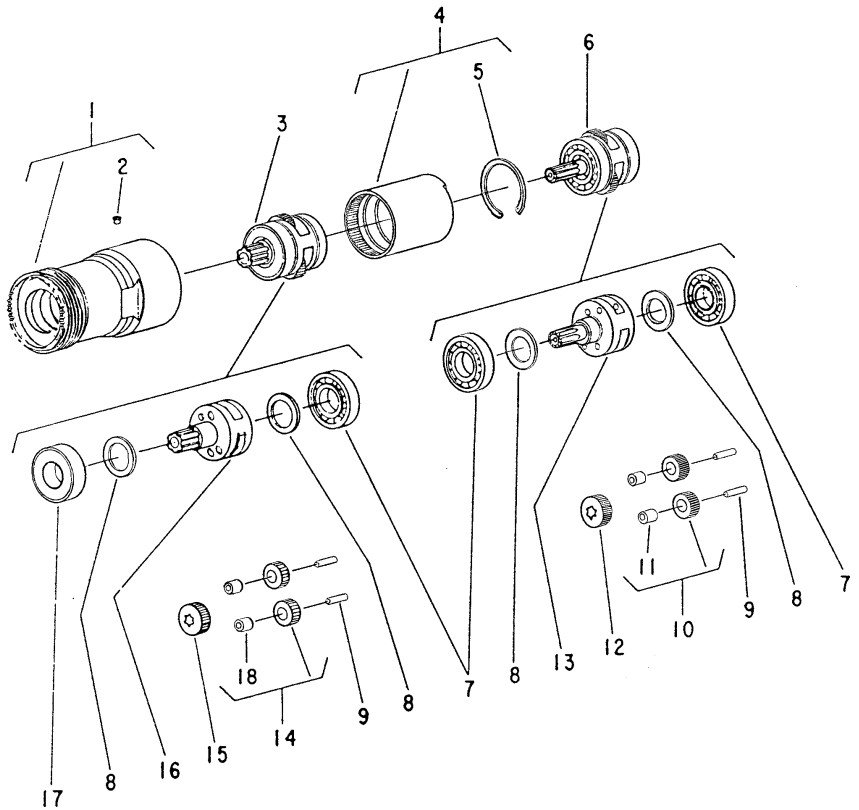
No.	No.	Description
1.	64007	Case—Gear
2.	30375	Fitting—Grease
3.	19265	Gear—Ring
4.	63387	Ass'y—Planetary Reduction (2000, 2600 RPM)
	63378	Ass'y—Planetary Reduction (2500, 3350 RPM)
	63382	Ass'y—Planetary Reduction (5800 RPM)
5.	10203	Bearing—Ball
6.	25439	Washer (2)*
7.	19317	Ass'y—Gear and Bearing (2000, 2600 RPM)(2)*
	19314	Ass'y—Gear and Bearing (2500, 3350 RPM)(2)*
	19331	Ass'y—Gear and Bearing (5800 RPM)(2)*
8.	10040	Bearing—Needle (2)*
9.	22700	Carrier—Gear (2000, 2600 RPM)
	64162	Carrier—Gear (2500, 3350 RPM)
	64161	Carrier—Gear (5800 RPM)
10.	30062	Pin (2)*
11.	10228	Bearing—Ball
12.	19267	Gear—Pinion (5800 RPM)



DOUBLE REDUCTION GEAR CASE (400, 540, 700, 900, 1200, 1600 RPM)

Fig. Part

No.	No.	Description
1.	64006	Case—Gear
2.	30375	Fitting—Grease
3.	63378	Ass'y—Planetary Reduction (400, 540, 700, 900 RPM)
	63382B	Ass'y—Planetary Reduction (1200, 1600 RPM)
4.	19266	Gear—Ring
5.	21510	Ring—Retainer
6.	63386	Ass'y—Planetary Reduction (400, 540 RPM)
	63377	Ass'y—Planetary Reduction (700, 900 RPM)
	63392	Ass'y—Planetary Reduction (1200, 1600 RPM)
7.	10203	Bearing—Ball (3)*
8.	25439	Washer (4)*
9.	30062	Pin (4)*
10.	19314	Ass'y—Gear and Bearing (400, 540 RPM)(2)*
	19331	Ass'y—Gear and Bearing (700, 900, 1200, 1600 RPM)(2)*
11.	10040	Bearing—Needle (2)*
12.	19267	Gear—Pinion (700, 900, 1200, 1600 RPM)
13.	64160	Carrier—Gear (400, 540 RPM)
	64159	Carrier—Gear (700, 900 RPM)
	22702	Carrier—Gear (1200, 1600 RPM)
14.	19314	Ass'y—Gear and Bearing (400, 540, 700, 900 RPM)(2)*
	19331B	Ass'y—Gear and Bushing (1200, 1600 RPM)(2)*
15.	19267	Gear—Pinion (1200, 1600 RPM)
16.	64162	Carrier—Gear (400, 540, 700, 900 RPM)
	64161	Carrier—Gear (1200, 1600 RPM)
17.	10228	Bearing—Ball
18.	10515	Bushing (1200, 1600 RPM)(2)*
	10040	Bearing—Needle (400, 540, 700, 900 RPM)(2)*



*Order Quantity As Required

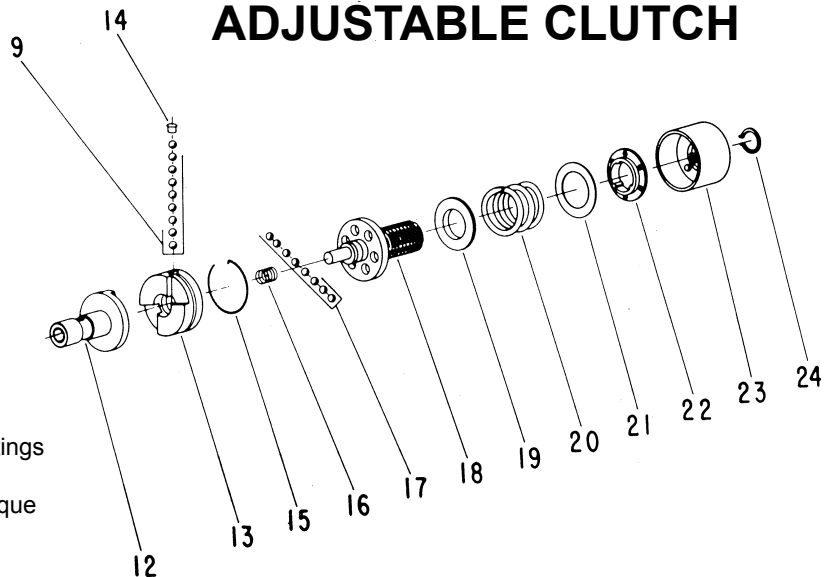


ADJUSTABLE CLUTCH

Fig. No.	Part No.	Description
9.	10902	Ball—Steel (9)*
12.	54077	Bit Holder
13.	54071	Jaw—Clutch
14.	54074	Retainer—Ball
15.	21827	Ring—Retaining
16.	41250	Spring
17.	10291	Ball—Steel (8)*
18.	22669	Spindle—Clutch
19.	54072	Guide—Spring
20.	41249	Spring—Compression (For torque settings above 25 inch pounds)
	41284	Spring—Compression (Green)(For torque setting below 25 inch pounds)
21.	35273	Washer
22.	54073	Washer—Index
23.	53095	Nut—Adjusting
24.	21774	Ring—Retaining

COMPLETE ASSEMBLY

53085	Ass'y—Adjustable Clutch (Includes Figs. 9, 13-24)
53107	Ass'y—Adjustable Clutch (Includes All Figs.)



NO. 2 1/2 SERIES RIGHT ANGLE ATTACHMENT— 1" DIAMETER STALL DRIVE

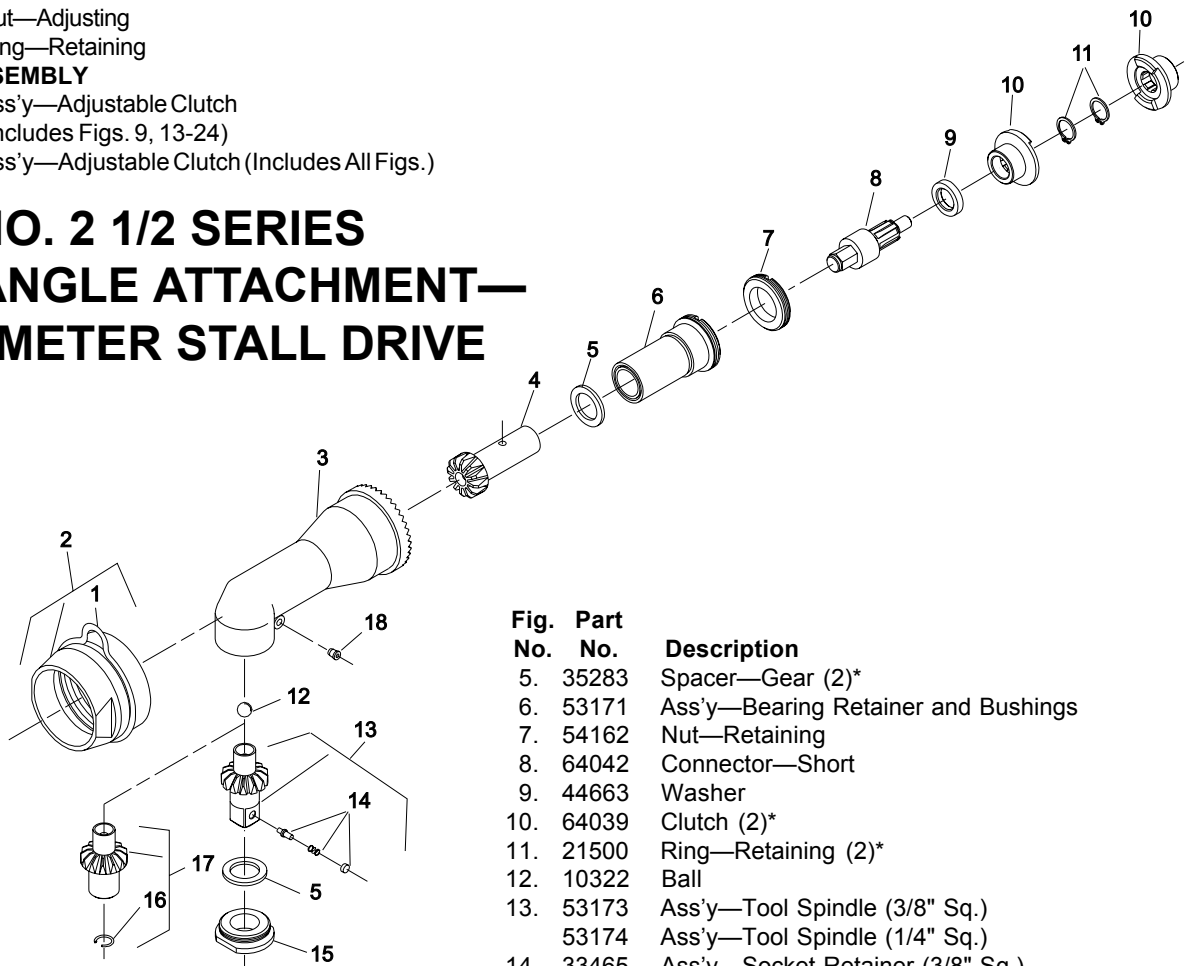


Fig. No.	Part No.	Description
1.	41248	Bail
2.	53181	Ass'y—Lock Sleeve and Bail
3.	11578	Angle Head (Includes Fig. 18)
4.	19470	Pinion

Fig. No.	Part No.	Description
5.	35283	Spacer—Gear (2)*
6.	53171	Ass'y—Bearing Retainer and Bushings
7.	54162	Nut—Retaining
8.	64042	Connector—Short
9.	44663	Washer
10.	64039	Clutch (2)*
11.	21500	Ring—Retaining (2)*
12.	10322	Ball
13.	53173	Ass'y—Tool Spindle (3/8" Sq.)
	53174	Ass'y—Tool Spindle (1/4" Sq.)
14.	33465	Ass'y—Socket Retainer (3/8" Sq.)
	53347	Ass'y—Socket Retainer (1/4" Sq.)
15.	54154	Retainer—Bearing
16.	21764	Ring—Wire
17.	53177	Ass'y—Tool Spindle (1/4" Hex)
18.	30375	Fitting—Grease

COMPLETE ASSEMBLY

16	Ass'y—Angle Head (3/8" Sq.)
14	Ass'y—Angle Head (1 1/4" Hex)
15	Ass'y—Angle Head (1 1/4" Sq.)

*Order Quantity As Required

**SIoux
TOOLS INC.**

2901 FLOYD BOULEVARD ■ PO BOX 507 ■ SIOUX CITY, IOWA 51102-0507 USA ■

Printed In U.S.A.